

# EXCHANGE & SUMMER PROGRAMMES

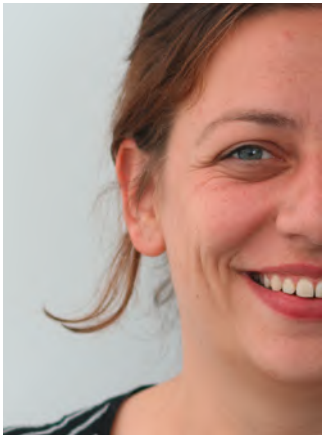
## UNDERGRADUATE & POSTGRADUATE



**RENNES  
SCHOOL  
of BUSINESS**

**UNFRAMED THINKING**

FOREWORD	3
CHOOSE YOUR PROGRAMME	4
ACADEMIC INFORMATION	6
SUMMER PROGRAMMES	8
ALUMNI	11
WHY RENNES SCHOOL OF BUSINESS	12
RENNES CAMPUS	14
RENNES: AN IDEAL LOCATION	15
PARIS CAMPUS	16
TRANSPORT & ACCESS	17
HOW TO PREPARE YOUR EXCHANGE	18
INTERNATIONAL STUDENTS: OVERALL WELCOME SERVICES	19



**ÉLODIE SAINT-YVES,**  
INTERNATIONAL PARTNERSHIPS  
& MOBILITY DIRECTOR

“ As choosing an institution to complete an exchange programme might be a difficult choice to make, Rennes School of business offers a unique environment to thrive both personally and academically. With 90% of faculty members and 100+ nationalities on the campus, Rennes School of Business has, since its creation, an international DNA that allows students to evolve in a multicultural context, to exchange ideas and learn from a truly international community. In a fast-evolving context, students get the opportunity to think beyond the frame, to discover new fields and anticipate tomorrow's challenges to make way for a better and more innovative future. They develop an “unframed thinking” state of mind.

Rennes school of Business has been recognised by the leading international accreditation organisations for the quality of its processes, faculty, research and programmes, and is in the TOP 1% of the world's business schools holding the three main international accreditations: AACSB, EQUIS and AMBA. This recognition is a guarantee of academic excellence and a promise to our students and partners. We look forward to welcoming you to Rennes School of Business. ”



# CHOOSE YOUR PROGRAMME

Rennes School of Business welcomes international exchange students from all over the world. Exchange students may register for classes either on transfer credit or on a double degree at under or postgraduate level according to the agreement between their home institution and Rennes School of Business and depending on the level of their studies.

ALL OUR EXCHANGE  
PROGRAMMES

SCAN HERE



## COURSE SELECTION

Students will be contacted in order to choose their courses by email 2 to 3 months before the start of the programme in order to make their choice of courses.

Exchange students usually register for about 30 ECTS credits, and may opt for French classes in addition to the business modules offered in each programme.

Double degree seeking students must follow Rennes SB's specific programme requirements.

## DIFFERENT LEVELS FOR DIFFERENT PATHWAYS!

### LEVEL 2 (Undergraduate - Fall Semester only)

4 ECTS/ course, business modules in various fields.

### LEVEL 3 (Undergraduate)

4 ECTS/course, tracks available in Sales & Marketing, Finance & Banking, Purchasing & Supply Chain.

### LEVEL 4 (Advanced Undergraduate)

4 ECTS/course, free choice of courses among a variety of business courses in different fields.

### LEVEL 5 (Postgraduate)

6 ECTS/course, choose one specialised Masters: Finance, Marketing, Human Resource Management, Innovation Management, Supply Chain Management.

### FOR ALL PROGRAMMES

Optional French language and French culture courses are available. All classes are taught in English.



## A MULTICULTURAL FACULTY

**The cultural diversity** represented by the Faculty at Rennes School of Business, along with their academic and professional track record, are of direct benefit to students, providing the global environment that mirrors the reality in which companies operate today.

Beyond their involvement in the five core academic disciplines (Marketing; Supply Chain Management & Information Systems; Strategy & Innovation; Finance & Accounting; and Management & Organisation).

**Faculty members showcase their research and expertise within the Rennes SB Research centres:** Rethinking tomorrow's organisation (RTO); AI-driven Business; Agribusiness; Green, Digital, & Demand-Driven Supply Chain Management (G3D); Financial market & corporate outcomes (FMCO).

Course modules are developed in a transversal fashion, providing students with a unique opportunity to approach key management topics from different cultural, functional, and disciplinary perspectives.



# ACADEMIC INFORMATION

## ADMISSION PROCEDURE

- Fully completed application form signed by the candidate and the Home University.
- Official transcripts for the entire education of the student at the Home University (translated into English if the transcripts are not in English, French, German, Spanish or Italian).
- CV (in English). Letter of motivation.
- Statement of purpose (in English) for double degree seeking students only.
- Copy of passport (or identity card if EU citizen).

## ACADEMIC CALENDAR

### Fall semester (all levels):

Beginning of September - End of December

### Spring semester:

- LEVEL 4 and LEVEL 5: Beginning of January - End of April
- LEVEL 3 and DOUBLE DEGREE BiM: Mid-January - Beginning of May

## NOMINATION DEADLINES

**Fall semester:** 10 May

**Spring semester:** 10 October

## APPLICATION DEADLINES

**Fall semester:** 20 May

**Spring semester:** 20 October



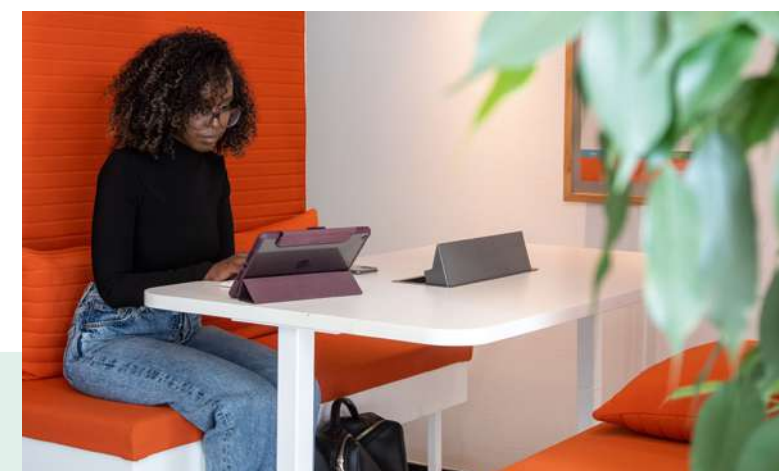
## GRADING SYSTEM

ECTS GRADES		GRADE POINT	RENNES SBGRADES
A	Excellent	5	70% or above
B	Very Good	4	65% to 69%
C	Good	3	58% to 64%
D	Satisfactory	2	50% to 57%
E	Sufficient	1	40% to 49%
Fx	Fail	-	30% to 39%
F	Fail	-	Below 30%

## TEACHING METHODS

Students are given a detailed outline at the beginning of each course (not available beforehand) where the professors provide learning objectives and outcomes, course description and main topics covered, teaching methods and bibliography, method of assessment.

The final examination is worth 60-70% of the total mark. The remaining is assessed on individual and/or group presentations, quizzes, case studies, etc. The final examinations always take place during the last 2 or 3 weeks of the semester and are compulsory for all students.



## LANGUAGE REQUIREMENTS

### STUDENTS ON TRANSFER OF CREDITS

A B2 level in English - (or equivalent TOEFL iBT/TOEIC/IELTS). All classes are conducted in English, therefore students are expected to have a sufficient command of the English language to be capable of understanding, making oral presentations, writing reports and exams.

### STUDENTS ON DOUBLE DEGREE

English language test required (except for native English speakers): TOEFL iBT > 80 or IELTS > 6.5 or TOEIC > 785 (for BiM3) / TOEIC > 800 (for PGE3).





# SUMMER PROGRAMMES

## CONSUMER BEHAVIOUR

MAY - JUNE

RENNES CAMPUS

27 hours - 6 ECTS credits

This module will explore the concept of consumer behaviour by critically exploring conceptual frameworks for understanding, measuring, and managing the current and upcoming digital generation.

Existing theories will be integrated to develop a holistic and managerially useful understanding of consumer behaviour.



## SUSTAINABLE BUSINESS

JUNE

RENNES CAMPUS

27 hours - 6 ECTS credits

This holistic programme will provide students with conceptual frameworks and practical ideas to understand how organisations and managers can optimise economic, social, and environmental performance to deliver a sustainable business strategy.

By discovering international and local 'Corporate Social Responsibility' (CSR) practices, students will examine how responsible managers and their companies' stakeholders can work together to create a more sustainable world.



THIS WAY  
FOR THE SUMMER  
PROGRAMMES

SCAN HERE



## CROSS-CULTURAL MANAGEMENT

RENNES CAMPUS

JUNE EXCHANGE

JULY FEE-PAYING

27 hours - 6 ECTS credits

The programme will deal with three main points:

- Overview of today's global business environment (people - planet - profits).
- The cross-cultural framework references.
- How to manage a cross-cultural team: dynamics and process strategies.

**Dynamics:** communication style, time, fate and destiny. **Process strategies:** work style, decision-making (responsible, sustainable, ethical), conflict management, feedback and recognition.

“ WE WELCOMED  
OVER 200 STUDENTS  
FROM 40 NATIONALITIES  
LAST YEAR! ”



# ARTIFICIAL INTELLIGENCE BUSINESS

FEE-PAYING PROGRAMME

MAY - JUNE

RENNES CAMPUS

27 contact hours - 3 ECTS credits  
x 4 modules

4 independent courses available for this programme. Data science for Business, AI Business Intelligence, Business Textual Learning and Business Network Intelligence. Students can choose to take one or several modules.

# PARIS & THE KEYS TO LUXURY BUSINESS

FEE-PAYING PROGRAMME

NEXT INTAKE:  
JULY 2025

PARIS CAMPUS

27 contact hours - 6 ECTS credits

The purpose of the programme is to provide students with the basics of the French luxury sector and the brief history of prominent luxury brands. Understand antecedents of luxury consumption. Discover the niche markets in the luxury sector. Understand the digital transformation of luxury brands.

# YOUR DEDICATED SUMMER PROGRAMME CONTACTS



**LAURA MEUNIER**

SUMMER PROGRAMMES  
& INSTITUTIONAL PARTNERSHIPS

**BÉNÉDICTE MORTIER**

SHORT PROGRAMMES COORDINATOR



summer.programmes@rennes-sb.com

Tel.: +33 (0)2 99 54 63 63

[rennes-sb.com](https://rennes-sb.com)

# ALUMNI

## RENNES SCHOOL OF BUSINESS ALUMNI, A STRONG INTERNATIONAL NETWORK

Being part of the Alumni community and getting the most out of a valuable network will boost your career throughout your professional life. Belonging to the Rennes School of Business Alumni network opens the door to:

### 150 EVENTS ORGANISED

every year (conferences, advice, executive guest speakers, "theme-based workshops")

More than

**26,000 MEMBERS**

(French & international)  
across 100 countries

More than

**2,000 JOB VACANCIES**

(and Alumni internships) posted in 2022



Take a look at  
[rennes-sb-alumni.com](https://rennes-sb-alumni.com)

**FEEL GOOD**

BY RENNES  
SCHOOL  
OF BUSINESS

SCAN HERE  
STUDENT  
WELL-BEING



## STUDENT CARE

At Rennes SB, we are convinced that in order to find their way, our students must begin by feeling good about their daily lives and their studies.

The 3 pillars of our Feel Good initiative are designed to help us reach this objective:

- > Well-being & health;
- > Ethics;
- > Diversity & inclusion.

By reinventing the student experience, the Feel Good team provides excellent services that contribute to making Rennes SB a great place to learn for all, by:

- > Fostering an authentic culture of student care with high quality services;
- > Boosting team spirit and empowering students with inspiring learning opportunities;
- > Upgrading campus life with thrilling events for students that promote the mixing of different cultures.





# WHY RENNES SCHOOL OF BUSINESS

Rennes School of Business, founded in 1990, is considered to be the most international School of Management in France. With its cosmopolitan environment, classes taught entirely in English and a network of more than 350 partner universities worldwide, Rennes School of Business gives you a unique opportunity to study in an international environment.

Inventing the future starts with looking at the present differently. At Rennes School of Business we believe that students also have knowledge which they can bring to their education, that students can learn and strive differently, that learning is an endless process!



## RENNES SB PREPARES ITS FUTURE GRADUATES FOR THE WORLD OF TOMORROW



- 105** permanent professors, of whom 90% are non-French
- 40** different nationalities
- 5** research centres



### SCHOOL

- 26** multicultural associations for students
- 100+** nationalities on campus
- 3** international accreditations: AACSB, AMBA and EQUIS



### STUDENTS

- 5,500** students on campus (55% from outside of France)
- 72%** of our graduates are employed in a position with an international dimension
- 91%** satisfaction rate for the choice of partner university
- 89%** of graduates recommend their friends to study at Rennes SB
- 98%** of graduates are employed 6 months after graduation

## RENNES SB: ONE OF THE BEST BUSINESS SCHOOLS IN THE WORLD!

**100+**  
nationalities

**350+**  
main partner  
universities

**100%**  
courses in English  
alongside with French  
& international students

### THE "WELCOME TO FRANCE" LABEL



Rennes School of Business has acquired the "Welcome to France" label, a certification issued by Campus France which attests to the quality of our international student support services.

### TRIPLE-CROWN ACCREDITED



Rennes School of Business is among the TOP 1% of business schools in the world (triple crown accredited) which attests the excellence of Rennes SB's teaching & research programmes.

### RANKINGS

NATIONAL RANKINGS		
BACHELOR IN MANAGEMENT		
LE PARISIEN ÉTUDIANT	<b>2</b>	Bachelor in Management Ranking 2023
CHALLENGES	<b>4</b>	Bachelor in Management Ranking 2023
L'ÉTUDIANT	<b>3</b>	Bachelor in Management Ranking 2022
GRANDE ÉCOLE PROGRAMME		
LE PARISIEN ÉTUDIANT	<b>10</b>	PGE Ranking 2023*
LE POINT	<b>10</b>	PGE Ranking 2023*

\*Post-prep business schools

### INTERNATIONAL RANKINGS

GRANDE ÉCOLE PROGRAMME		
<b>71</b>	FT	MASTERS IN MANAGEMENT 2023 RANKING
MSc IN INTERNATIONAL FINANCE		
<b>35</b>	FT	MASTERS IN FINANCE 2023 RANKING
EXECUTIVE MBA		
<b>83</b>	FT	EMBA 2023 RANKING
<b>121/131</b>	QS	WORLD UNIVERSITY RANKINGS
	QS	Executive MBA Ranking 2023



# RENNES CAMPUS

## A FIRST-CLASS LIVING ENVIRONMENT

Situated in the city of Rennes, just 10 minutes from Rennes' historic centre and accessible 6 days a week, the Rennes School of Business campus offers an ideal working environment for the educational requirements and lives of its students.

TO WATCH   
THIS WAY FOR  
THE VIRTUAL VISIT!



- 27,000 m<sup>2</sup> & 4 buildings
- A Bloomberg trading room
- A business incubator
- An InnoLounge (innovation space)
- A central avenue, "La rue des entrepreneurs", entirely for students
- Sports & training rooms
- 1 outdoor sports field
- 1 music studio



- 1 large cafeteria
- 1 snack bar
- Lecture theatres, with 50 to 400 seats
- 1 office for each of the student associations
- 1 language resource centre
- 1 multimedia resource centre: more than 20,000 press publications & academic journals, 20,000 books & a collection of eBooks



TO READ  
LIFE IN  
RENNES

## RENNES: AN IDEAL LOCATION

Rennes School of Business is located in Rennes, the capital and largest city of the Brittany region of France. Students can take advantage of this central location which allows for quick access to nearby destinations: in only 55 minutes one can breathe in fresh sea air; the city of lights, Paris, is just 1h25mn by train; and it's possible to fly to lovely London in just 1 hour!



Rennes is a vibrant, beautiful city steeped in history and filled with ancient, medieval architecture juxtaposed by modern amenities. It is clearly a student city: the total population of Rennes (426,500 people) includes 70,000 students. Officially ranked by the national press, it is constantly developing and expanding.

**Ranked number 2,**  
amongst the best cities  
to live in France.  
(HelloWork 2022)

**Ranked number 1**  
as the city with the most  
job offers in France.  
(Le Figaro 2022)

**Ranked number 2,**  
amongst the best cities  
to study in France, out of 43.  
(L'Étudiant, 2021-2022)

**Ranked number 1,**  
most walkable  
city in France.

[CLICK HERE](#) 





# PARIS CAMPUS

## TO STUDY IN THE VERY HEART OF PARIS!



Rennes SB has premises in Paris (9 rue d'Athènes, near Saint-Lazare railway station) to accommodate both Executive Education and initial training students for part-time, full-time or work-study programmes, as well as a place to welcome its Alumni in a dedicated space.

This enables 26,000 Alumni to develop their activities, helping promote the careers of both current and future graduates. This new location also allows the School to be more connected than ever to major national and international companies in the Paris region, particularly supporting the growth of its Executive Education department.

For the students, this campus expands access to the labour market and facilitate their integration into one of the most dynamic zones in Europe, all just 1h25 from Rennes by train!



WELCOME TO  
OUR CAMPUS PARIS  
TO WATCH



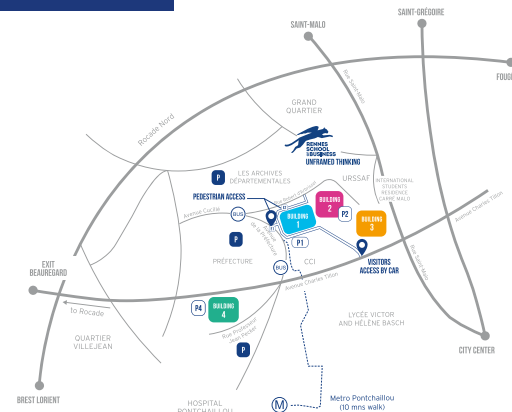
### OUR PARIS CAMPUS WELCOMES

- **Masters**
  - Master in Culture, Creative & Luxury Industries
- **Work-study masters**
  - Master in Logistics & Supply Chain Management
  - Master in Data Analysis, Intelligence & Security
- **Summer programme**
  - Summer Programme - Paris & the keys to Luxury Business
- **Forums & events with companies**
- **An Alumni house to develop the projects of the network of our graduates**
- **Continuing education programmes**

# ACCESS

## TRANSPORT & ACCESS TO SCHOOLS

### RENNES CAMPUS



#### PUBLIC TRANSPORTATION

##### From the Airport:

- **BUS C6** from **Aire Libre Aéroport**
- Stop at station **République** (city center)
- Connexion with **(Métro)** or **(Bus)**

##### From city center/Railway station:

- **(Métro)** direction **Kennedy**
- Stop at station **Pontchaillou**
- 10 mns walking distance to school

or

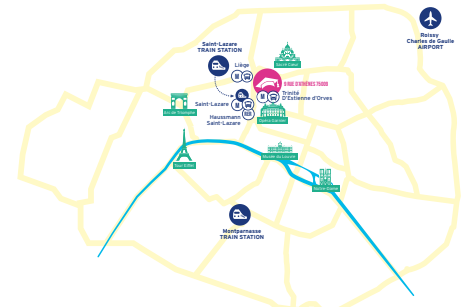
- **(Bus)** City station **C4 République**
- Direction **Grand Quartier**
- Stop at station **Préfecture (Rennes)**

#### ACCESS

- **Pedestrian accesses:** 2 rue Robert d'Arbrissel or Avenue de la Préfecture
- **Parking visitors**  
**(P1)** 6 avenue Charles Tillon
- **Other free parking places** (see **P** map)

- (P1)** Visitors Parking
- (P2)** Students Parking
- (P4)** Administration Parking
- (P)** Free parking
- (BUS)** BUS Stop - Préfecture (Rennes)

### PARIS CAMPUS



#### FROM THE NEAREST RATP STATIONS

**(RER)** **(M)** **(BUS)** **(RER E)** Haussmann - Saint-Lazare

**(M)** **(M3)** **(M12)** **(M13)** **(M14)** Saint-Lazare

**(M13)** Liège

**(M9)** Saint-Augustin

**(M12)** Trinité - D'Estienne d'Orves

**(BUS)** Saint-Lazare - Budapest  
Lines **21** **26** **43** **95**

**(BUS)** Trinité - D'Estienne d'Orves  
Lines **21** **65**

#### FROM MONTPARNASSE TRAIN STATION

- Get **(M13)** Montparnasse-Bienvenue towards **Asnières-Guenevilliers** or **Saint-Denis**
- Get off at **Liège** metro stop
- 6 minutes walk to the School

or

- **(M12)** Montparnasse-Bienvenue towards **Front Populaire**
- Get off at **Trinité - D'Estienne d'Orves** metro stop
- 7 minutes walk to the School

or

- **(BUS)** Ligne **95** towards **Porte de Montmartre**
- Get off at the **Opéra** bus stop
- 14 minutes walk to the School

#### FROM CHARLES DE GAULLE AIRPORT

- Take the **(CDGVAL)** to Terminal 1 (free)
- Take **(RER B)** (Paris) and get off at **Gare du Nord**
- Change to **(RER E)** from **Magenta** station towards **Haussmann - Saint-Lazare**
- Get off **Haussmann - Saint-Lazare**
- 10 minutes walk to the School



# HOW TO PREPARE YOUR EXCHANGE

## ACCOMMODATION

Students may consult the Rennes SB' online accommodation platform for housing, both in France and abroad. You will find many offers located near the campus from private landlords, residence halls and real estate agencies on the platform: [rennes-sb.studapart.com/en](https://rennes-sb.studapart.com/en)

You can make your reservation request directly on the platform. The accommodation team will send you the enrolment key allowing you to login on the platform once you will have enrolled at Rennes SB. If you have any questions, do not hesitate to contact the platform team via the online Chat.



## ORIENTATION PROGRAMME

The School provides an orientation programme for all international students the week before classes start. Sessions are compulsory and cover application for residence permit, health insurance, banking, internet provider, mobile phones, bus pass and information sessions on French culture, academic expectations and standards.

## VISA FOR NON-EUROPEAN STUDENTS

Please contact the local French Embassy or Campus France in your country to obtain a visa application to arrange your stay in France as soon as you are admitted. [campusfrance.org/en](https://campusfrance.org/en)

## RESIDENT PERMIT

The international office of Rennes School of Business helps students to obtain a resident permit.

## HEALTH INSURANCE

The French social security system is mandatory, but free of charge for any Rennes School of Business student. To be covered medically during the first three months, the school strongly advises students to take out a private social security insurance contract in their home country.

# INTERNATIONAL STUDENTS: OVERALL WELCOME SERVICES

## THE INTERNATIONAL STUDENT OFFICE

assists students and helps them to find accommodation and to manage administrative formalities.

## WELL'COME

(the international student association) helps international students integrate school and life in Rennes. Not only does it pick them up at the station or airport on their arrival, it also organises tourist trips (Mont St. Michel, Paris, etc.) and sports events.

## ALOHA CAMP

The school organises an Aloha camp for all international students upon their arrival in September. Students will have the opportunity to finalise their administrative enrolment and find a wide range of services in one place: healthcare, residence permits, banking, internet providers, mobile phones, bus passes, etc.

## OTHER SPECIAL WELCOME EVENTS

Campus Game, to discover the school, its staff, its faculty and facilities.

Campus Festival, to meet the Rennes School of Business community through music and sports events.

**voice**  
*design sprint*

**ARE YOU READY  
FOR UNLIMITED IMPACT?  
GET INVOLVED!**

Active participation by the students  
in the life of the school



[linkedin.com/school/rennessb](https://linkedin.com/school/rennessb)



[facebook.com/RennesSB](https://facebook.com/RennesSB)



[instagram.com/rennes\\_sb](https://instagram.com/rennes_sb)



[twitter.com/rennessb](https://twitter.com/rennessb)



[tiktok.com/@rennessb](https://tiktok.com/@rennessb)



[youtube.com/@RennesSchoolofBusiness](https://youtube.com/@RennesSchoolofBusiness)



[exchange@rennes-sb.com](mailto:exchange@rennes-sb.com)



+33 (0)2 99 54 63 63

**YOUR EXCHANGE  
PROGRAMMES  
CONTACT**



# AT RENNES SB

# THE HARDEST DECISION IS KNOWING WHICH LANGUAGE TO USE!



[rennes-sb.com](https://rennes-sb.com)



**RENNES  
SCHOOL  
öBUSINESS**

**UNFRAMED THINKING**

Rennes School of Business est un établissement  
d'enseignement supérieur technique reconnu par l'État.

2 rue Robert d'Arbrissel 35065 RENNES  
9 rue d'Athènes 75009 PARIS

+33 (0)2 99 54 63 63  
[contact@rennes-sb.com](mailto:contact@rennes-sb.com)